



## Immunohistochemical evaluation of p63 and cyclin D1 in oral squamous cell carcinoma and leukoplakia

Sunit B. Patel<sup>1</sup>, Bhari S. Manjunatha<sup>2</sup>, Vandana Shah<sup>3</sup>, Nishit Soni<sup>4</sup>, Rakesh Sutariya<sup>5</sup>

<sup>1</sup>Department of Oral Pathology, Ahmedabad Dental College, Ahmedabad, India,

<sup>2</sup>Department of Oral Biology, Basic Dental Sciences, Faculty of Dentistry, Al-Huwaiyah, Taif University, Taif, Kingdom of Saudi Arabia,

<sup>3</sup>Department of Oral Pathology, K.M.Shah Dental College, Vadodara,

<sup>4</sup>Department of Oral Pathology, Karnavati School of Dentistry, Gandhinagar,

<sup>5</sup>Department of Oral Pathology, Vaidik Dental College, Daman, India

**Abstract** (J Korean Assoc Oral Maxillofac Surg 2017;43:324-330)

**Objectives:** There are only a limited number of studies on cyclin D1 and p63 expression in oral squamous cell carcinoma (OSCC) and leukoplakia. This study compared cyclin D1 and p63 expression in leukoplakia and OSCC to investigate the possible correlation of both markers with grade of dysplasia and histological grade of OSCC.

**Materials and Methods:** The study included a total of 60 cases, of which 30 were diagnosed with OSCC and 30 with leukoplakia, that were evaluated immunohistochemically for p63 and cyclin D1 expression. Protein expression was correlated based on grades of dysplasia and OSCC.

**Results:** Out of 30 cases of OSCC, 23 cases (76.7%) were cyclin D1 positive and 30 cases (100%) were p63 positive. Out of 30 cases of leukoplakia, 21 cases (70.0%) were cyclin D1 positive and 30 (100%) were p63 positive ( $P < 0.05$ ).

**Conclusion:** The overall expression of cyclin D1 and p63 correlated with tumor differentiation, and increases were correlated with poor histological grades, from well-differentiated to poorly-differentiated SCC. Increased cyclin D1 and p63 expression was associated with the severity of leukoplakia. Based on these results cyclin D1 and p63 products can be a useful tool for improved leukoplakia prognosis.

**Key words:** Cyclin D1, Immunohistochemistry, Leukoplakia, Oral squamous cell carcinoma, p63

[paper submitted 2017. 1. 3 / revised 2017. 4. 30 / accepted 2017. 7. 5]

### I. Introduction

Oral cancer is the sixth most common malignancy and is a major cause of cancer morbidity and mortality worldwide<sup>1</sup>. More than 90% of tumors that originate in the head and neck area are squamous cell carcinoma (SCC), a tumor of epithelial origin. Oral squamous cell carcinoma (OSCC) can be preceded by clinically evident premalignant lesions. Among the premalignant lesions, leukoplakia is the most commonly encountered lesion and can show varying degrees of epithe-

lial dysplasia ranging from mild to severe. The likelihood of developing an invasive carcinoma increases with the severity of dysplasia. The frequency of carcinomatous changes in oral leukoplakia varies from 6.6% to 36%<sup>2</sup>.

Immunohistochemical (IHC) studies have investigated OSCC to better understand the biology, diagnosis, prognosis, and treatment<sup>3</sup>. Rapid progress has been made in the last several years to elucidate the underlying cell cycle regulation and other molecular mechanisms in mammalian cells. Cyclin D1, a 45 kDa protein, is part of the molecular system that regulates the cell cycle G1 to S transition<sup>4</sup>. Dysregulation of the cell cycle machinery is a fundamental hallmark of cancer, and this is emerging as a central theme in oral carcinogenesis. Therefore, the genes involved in cell cycle control represent targets for oncogenic abnormalities, and cyclin D1 could prove to be a worthwhile target for treatment approaches<sup>3</sup>.

p63 protein has been regarded as a novel basal cell IHC marker. A dual role of p63 protein has been reported<sup>5,6</sup>. p63 protein is expressed in the proliferative layer of cells near

#### **Bhari S. Manjunatha**

Department of Oral Biology, Basic Dental Sciences, Faculty of Dentistry, Al-Huwaiyah, Taif University, Taif 21944, Kingdom of Saudi Arabia  
TEL: +966-012-7272020 FAX: +966-012-7274299

E-mail: drmanju26@hotmail.com

ORCID: <http://orcid.org/0000-0002-4415-2538>

© This is an open-access article distributed under the terms of the Creative Commons Attribution Non-Commercial License (<http://creativecommons.org/licenses/by-nc/4.0/>), which permits unrestricted non-commercial use, distribution, and reproduction in any medium, provided the original work is properly cited.

Copyright © 2017 The Korean Association of Oral and Maxillofacial Surgeons. All rights reserved.

the basement membrane of the normal oral mucosa, where it likely prevents basal cells from differentiating and thereby helps to maintain their basal cell status. However, upon dysplastic change (i.e., transition from normal oral mucosa to epithelial dysplasia), dysplastic keratinocytes above the basal layer can shift to a status similar to the embryogenesis condition and are still able to express p63 protein, which produces an antidifferentiation effect as well as a proliferative capacity of dysplastic cells in the oral dysplastic mucosa. p63 can contribute to the development of epithelial dysplasia by altering stem cell function in the basal layer, resulting in an increased number of proliferating cells, and this can contribute to the altered distribution in basal and suprabasal layers within oral epithelial dysplasia<sup>4,7</sup>.

This study of cyclin D1 as well as p63 expression indicated that these gene products can be useful for a more precise diagnosis of leukoplakia and OSCC.

## II. Materials and Methods

This was a laboratory-based study that involved using 10% neutral buffered fixed formalin and representative paraffin-embedded histopathologically-diagnosed tissue cases of OSCC and leukoplakia, which were retrieved from the Department of Oral and Maxillofacial Pathology, K.M.Shah Dental College and Hospital (Vadodara, India). The samples were retrieved after the study was approved by the ethical committee of the institution, K.M.Shah Dental College and Hospital.

A total of 60 cases, comprised of leukoplakia and OSCC, were evaluated for p63 and cyclin D1 expression. The study included 30 cases of OSCC and 30 leukoplakia cases. OSCC was grouped into 3 categories based on Broder's histopathological grading: well-differentiated (WDSCC), moderately-differentiated (MDSCC), and poorly-differentiated (PDSCC) carcinoma.

Leukoplakia tissues were subdivided according to the World Health Organization classification from 2005, using the architecture and cytology criteria of mild dysplasia, moderate dysplasia, and severe dysplasia.

### 1. Immunohistochemistry

Two to three serial sections, 4  $\mu$ m thick, were placed on silanized slides for p63 and cyclin D1 IHC staining. The protocols for both markers were performed according to the manufacturer's recommendations. The sections were de-

paraffinized and rehydrated through changes of xylene and descending grades of alcohol. Antigen retrieval was carried out in citrate buffer with a pressure cooker for 5 minutes. The pressure cooker was allowed to cool to room temperature with the slides remaining in the buffer for 15 to 20 minutes.

The sections were incubated with peroxidase blocking reagent for 15 minutes, followed by incubation with ready to use monoclonal p63 and cyclin D1 antibody (Dako EnVision FLEX system; Dako, Glostrup, Denmark) for 1 hour at room temperature.

After additional incubation with secondary antibody for 45 minutes, visualization was performed using freshly prepared substrate chromogen solution for 10 minutes. The slides were then counterstained with Harri's hematoxylin for 2 minutes. The presence of brown colored end product at the site of target antigen was indicative of positive immunoreactivity. The absence of staining in the negative control tissue demonstrated specificity.

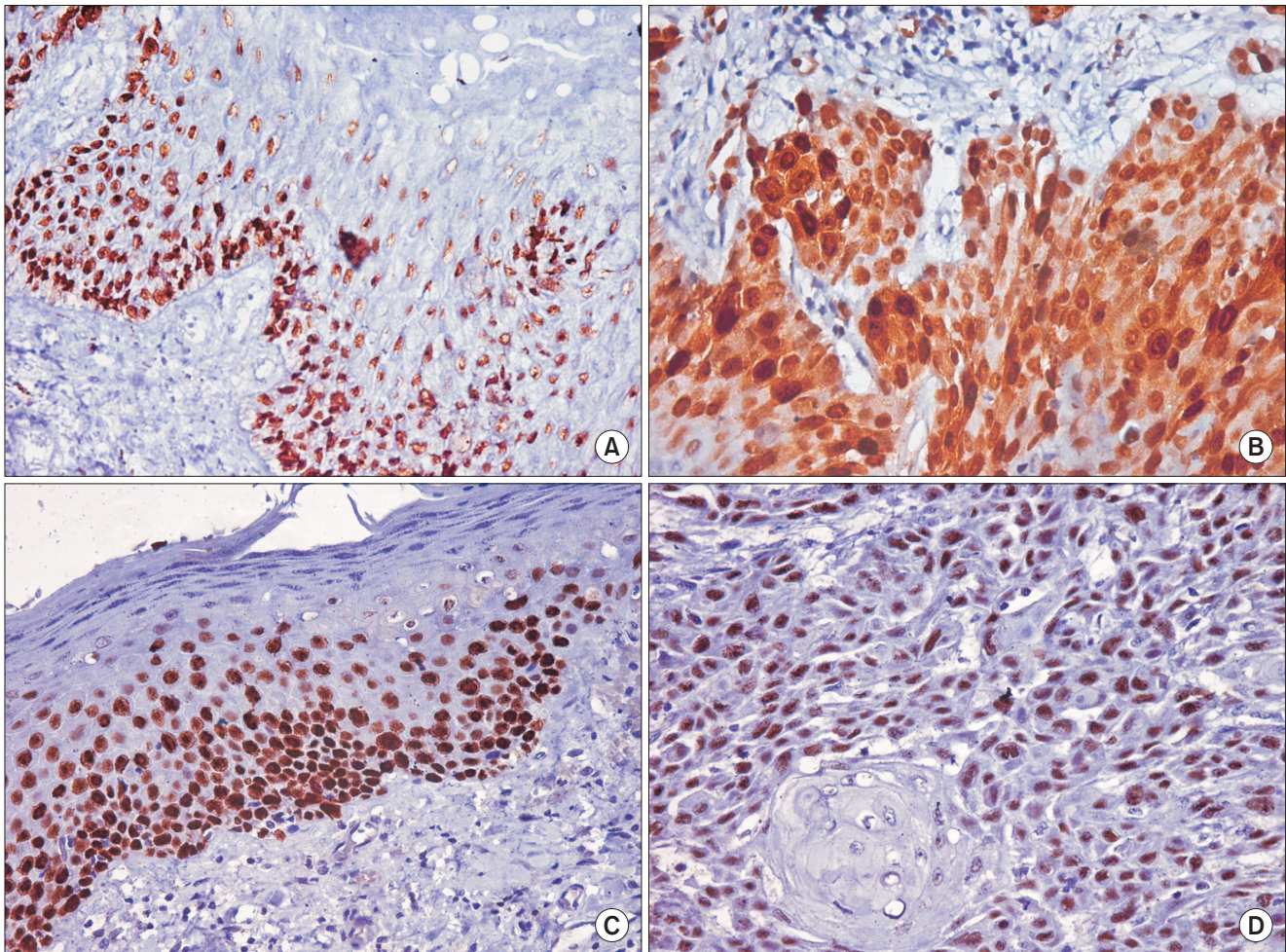
The positive results were further assessed for intensity of staining, which was graded for statistical analyses. In cases with staining heterogeneity, the expression was grouped according to the predominant staining intensity as (+) mild staining, (++) moderate staining, and (+++) intense staining based on a study by Castle et al.<sup>8</sup>. All observations were performed by two more observers in order to eliminate interobserver bias.

### 2. Statistical analyses

A chi-square test was used for comparison and correlation between leukoplakia and OSCC and between grades of dysplasia and OSCC. Statistical significance was defined as  $P < 0.05$ . The data collected were analysed statistically using SPSS Statistics ver. 17 (SPSS Inc., Chicago, IL, USA).

## III. Results

Cyclin D1 positivity was seen in 21 cases (70.0%) of leukoplakia in Fig. 1. A and 23 cases (76.7%) of OSCC in Fig. 1. B. Mild dysplasia (37.5%), moderate dysplasia (66.7%), and severe dysplasia (92.3%) were identified, and OSCC grades included WDSCC (66.7%), MDSCC (87.5%), and PDSCC (85.7%). These dysplasia and OSCC grades showed (Table 1) p63 positivity in all cases of leukoplakia in Fig. 1. C and OSCC in Fig. 1. D. (Table 2) Statistical significance at  $P < 0.05$  was observed for cyclin D1 and p63 expression between 2 categories of dysplasia and OSCC. (Tables 3, 4) Higher levels



**Fig. 1.** A. Cyclin D1 expression in leukoplakia (x400). B. Cyclin D1 expression in oral squamous cell carcinoma (x400). C. p63 expression in leukoplakia (x400). D. p63 expression in oral squamous cell carcinoma (x400).

Sunit B. Patel et al: Immunohistochemical evaluation of p63 and cyclin D1 in oral squamous cell carcinoma and leukoplakia. J Korean Assoc Oral Maxillofac Surg 2017

**Table 1.** Dysplasia and OSCC grading intensity: cyclin D1 positive cases

Case group	No. of total cases	No. of positive cases (%)	Staining intensity		
			(+)	(++)	(+++)
Leukoplakia	30	21 (70.0)	11	7	3
Mild dysplasia	8	3 (37.5)	3	0	0
Moderate dysplasia	9	6 (66.7)	2	4	0
Severe dysplasia	13	12 (92.3)	6	3	3
OSCC	30	23 (76.7)	6	10	7
Well-differentiated	15	10 (66.7)	5	4	1
Moderately-differentiated	8	7 (87.5)	1	4	2
Poorly-differentiated	7	6 (85.7)	0	2	4

(OSCC: oral squamous cell carcinoma)

Sunit B. Patel et al: Immunohistochemical evaluation of p63 and cyclin D1 in oral squamous cell carcinoma and leukoplakia. J Korean Assoc Oral Maxillofac Surg 2017

and increased expression of cyclin D1 and p63 were found in different grades of dysplasia in leukoplakia cases, as shown in Table 5. Similarly, the expression of both cyclin D1 and p63 was pronounced in well-differentiated SCC. However, the intensity of both cyclin D1 and p63 expression was also

notable in poorly-differentiated SCC.(Table 6) Comparison of both cyclin D1 and p63 expression in different grades of dysplasia of leukoplakia cases showed no statistically significant differences. Cyclin D1 expression was highly significant compared to severe and mild grades of dysplasia.(Table 7)

**Table 2.** Dysplasia and OSCC grading intensity: p63 positive cases

Case group	No. of total cases	Staining intensity		
		(+)	(++)	(+++)
Leukoplakia	30	12	14	4
Mild dysplasia	8	5	3	0
Moderate dysplasia	9	2	6	1
Severe dysplasia	13	5	5	3
OSCC	30	11	13	6
Well-differentiated	15	10	4	1
Moderately-differentiated	8	1	5	2
Poorly-differentiated	7	0	4	3

(OSCC: oral squamous cell carcinoma)

Sunit B. Patel et al: Immunohistochemical evaluation of p63 and cyclin D1 in oral squamous cell carcinoma and leukoplakia. *J Korean Assoc Oral Maxillofac Surg* 2017**Table 3.** Statistical analysis of dysplasia and OSCC in cyclin D1

Case group	No. of positive cases	Staining intensity			P-value
		(+)	(++)	(+++)	
Leukoplakia	21	11	7	3	0.278 (NS)
OSCC	23	6	10	7	
Mild dysplasia	3	3	0	0	0.097 (NS)
Moderate dysplasia	6	2	4	0	
Moderate dysplasia	6	2	4	0	0.133 (NS)
Severe dysplasia	12	6	3	3	
Severe dysplasia	12	6	3	3	0.029*
Mild dysplasia	3	3	0	0	
WDSCC	10	5	4	1	0.273 (NS)
MDSCC	7	1	4	2	
MDSCC	7	1	4	2	0.517 (NS)
PDSCC	6	0	2	4	
PDSCC	6	0	2	4	0.04*
WDSCC	10	5	4	1	

(OSCC: oral squamous cell carcinoma, WDSCC: well-differentiated OSCC, MDSCC: moderately-differentiated OSCC, PDSCC: poorly-differentiated OSCC, NS: not significant)

\*P&lt;0.05.

Sunit B. Patel et al: Immunohistochemical evaluation of p63 and cyclin D1 in oral squamous cell carcinoma and leukoplakia. *J Korean Assoc Oral Maxillofac Surg* 2017

Both cyclin D1 and p63 expression was statistically significant compared with poor grades of SCC, as shown in Table 8.

## IV. Discussion

Many studies have assessed SCCs, with a primary objective to understand the biology and determine the severity and prognosis of oral cancers with diverse behavior<sup>8</sup>. The cell cycle impacts the complexity of growth, renewal, and repair in all organisms<sup>9</sup> and can be visualized as a relay race consisting of G1, S, G2, M, and G0 phases. Each of these laps

**Table 4.** Statistical analysis of dysplasia and OSCC in p63

Case group	No. of positive cases	Staining intensity			P-value
		(+)	(++)	(+++)	
Leukoplakia	21	12	14	4	0.278 (NS)
OSCC	23	11	13	6	
Mild dysplasia	8	5	3	0	0.198 (NS)
Moderate dysplasia	9	2	6	1	
Moderate dysplasia	9	2	6	1	0.426 (NS)
Severe dysplasia	13	5	5	3	
Severe dysplasia	13	5	5	3	0.249 (NS)
Mild dysplasia	8	5	3	0	
WDSCC	15	10	4	1	0.044 (NS)
MDSCC	8	1	5	2	
MDSCC	8	1	5	2	0.535 (NS)
PDSCC	7	0	4	3	
PDSCC	7	0	4	3	0.009*
WDSCC	15	10	4	1	

(OSCC: oral squamous cell carcinoma, WDSCC: well-differentiated OSCC, MDSCC: moderately-differentiated OSCC, PDSCC: poorly-differentiated OSCC, NS: not significant)

\*P&lt;0.05.

Sunit B. Patel et al: Immunohistochemical evaluation of p63 and cyclin D1 in oral squamous cell carcinoma and leukoplakia. *J Korean Assoc Oral Maxillofac Surg* 2017**Table 5.** Cyclin D1 and p63 expression based on intensity and grade of dysplasia

Case	Cyclin D1 intensity				p63 intensity			
	Total	(+)	(++)	(+++)	Total	(+)	(++)	(+++)
Mild dysplasia	3 (37.5)	3 (37.5)	0	0	8 (100)	5 (62.5)	3 (37.5)	0
Moderate dysplasia	6 (66.7)	2 (22.2)	4 (44.4)	0	9 (100)	2 (22.2)	6 (66.7)	1 (11.1)
Severe dysplasia	12 (92.3)	6 (46.2)	3 (23.1)	3 (23.1)	13 (100)	5 (38.5)	5 (38.5)	3 (23.1)

Values are presented as number (%).

Sunit B. Patel et al: Immunohistochemical evaluation of p63 and cyclin D1 in oral squamous cell carcinoma and leukoplakia. *J Korean Assoc Oral Maxillofac Surg* 2017**Table 6.** Cyclin D1 and p63 expression based on intensity and grade of OSCC

Case	Cyclin D1 intensity				p63 intensity			
	Total	(+)	(++)	(+++)	Total	(+)	(++)	(+++)
Well-differentiated	10 (66.7)	5 (33.3)	4 (26.7)	1 (6.7)	15 (100)	10 (6.7)	4 (26.7)	1 (6.7)
Moderately-differentiated	7 (87.5)	1 (12.5)	4 (50.0)	2 (25.0)	8 (100)	1 (12.5)	5 (62.5)	2 (25.0)
Poorly-differentiated	6 (85.7)	0	2 (28.6)	4 (57.1)	7 (100)	0	4 (57.1)	3 (42.9)

(OSCC: oral squamous cell carcinoma)

Values are presented as number (%).

Sunit B. Patel et al: Immunohistochemical evaluation of p63 and cyclin D1 in oral squamous cell carcinoma and leukoplakia. *J Korean Assoc Oral Maxillofac Surg* 2017

**Table 7.** Cyclin D1 and p63 expression in different grades of leukoplakia (dysplasia)

Dysplasia	Cyclin D1 intensity		p63 intensity	
	Chi-square	P-value	Chi-square	P-value
Mild vs moderate	4.657	0.097 (NS)	3.238	0.198 (NS)
Moderate vs severe	5.601	0.133 (NS)	1.706	0.426 (NS)
Severe vs mild	8.986	0.029*	2.448	0.294 (NS)

(NS: not significant)

\*P<0.05.

Sunit B. Patel et al: Immunohistochemical evaluation of p63 and cyclin D1 in oral squamous cell carcinoma and leukoplakia. J Korean Assoc Oral Maxillofac Surg 2017

is regulated by a distinct set of “cyclins” that activate their CDK partners and propel the cell forward in its proliferative pool. Negative control over the cell cycle is exerted by CDK inhibitors<sup>10</sup>.

Cancer cell escape from the cell cycle machinery reflects a fundamental hallmark of cancer progression and is emerging as a central theme in oral carcinogenesis<sup>3</sup>. Indeed, the strongest connection between cyclins and oncogenesis was shown in studies on cyclin D1<sup>11</sup>. The underlying mechanisms for cyclin D1 overexpression include gene amplification, chromosomal translocation, and other post translational mechanisms<sup>3,12</sup>.

This study utilized the cyclin D1 monoclonal antibody for OSCC to elucidate the role of this key cell cycle regulator in this neoplasia. In our study, 21 cases (70.0%) of leukoplakia showed cyclin D1 positive expression, which is slightly lower than the findings reported by Castle et al.<sup>8</sup>, which found 84.62% positive expression. Eleven cases (52.38%) showed mild, 7 cases (33.33%) showed moderate, and 3 cases (14.29%) showed intense cyclin D1 expression. These findings were similar to Castle et al.<sup>8</sup> who found that 45.45% of patients showed mild, 40.90% showed moderate, and 13.63% showed intense cyclin D1 expression. All positive mild dysplasia cases showed mild expression, while 50% of severe dysplasia cases showed moderate to intense expression, which shows that the cyclin D1 expression increased in parallel with the severity of dysplasia.

Twenty-three cases (76.7%) of OSCC showed positive cyclin D1 expression, which is slightly higher than studies reported by Angadi and Krishnapillai<sup>13</sup>, Lam et al.<sup>14</sup>, and Goto et al.<sup>15</sup>, which found 70.73%, 63%, and 65.9% positive cyclin D1 expression, respectively. In this study, 60% of WDSCC cases showed mild to moderate expression that was similar to results reported by Angadi and Krishnapillai<sup>13</sup> (46.9%) and Goto et al.<sup>15</sup> (67.74%). All PDSCC cases showed moderate to intense cyclin D1 expression, which is also in concordance

**Table 8.** Cyclin D1 and p63 expression in different grades of OSCC

OSCC	Cyclin D1 intensity		p63 intensity	
	Chi-square	P-value	Chi-square	P-value
Well vs moderate	3.897	0.273 (NS)	6.257	0.044 (NS)
Moderate vs poor	2.277	0.517 (NS)	1.25	0.535 (NS)
Poor vs well	8.325	0.04*	9.324	0.009*

(OSCC: oral squamous cell carcinoma, NS: not significant)

\*P<0.05.

Sunit B. Patel et al: Immunohistochemical evaluation of p63 and cyclin D1 in oral squamous cell carcinoma and leukoplakia. J Korean Assoc Oral Maxillofac Surg 2017

with Angadi and Krishnapillai<sup>13</sup> (88.90%). In addition, Goto et al.<sup>15</sup> (100%) indicated that cyclin D1 expression increases and is correlated with poor histological grade. The difference in expression was statistically significant (P<0.05). Moreover, cyclin D1 overexpression has been reported in various diverse histogenesis tumors, such as breast carcinomas<sup>16</sup>, hepatocellular carcinomas<sup>17</sup>, endometrial carcinoma<sup>18</sup>, colon carcinomas<sup>16</sup>, esophageal carcinoma<sup>19,20</sup>, and lung carcinoma<sup>12</sup>.

p63 is a p53 homologue that plays a distinctive role in the physiology of the epithelium. TAp63, like p53, exhibits tumor-suppressive properties, while up-regulation of ΔNp63 isoforms is common and a distinctive feature of tumorigenesis<sup>21</sup>. The role of p63 in oral dysplasia and tumors has been the focus of numerous studies, although the results remain conflicting. It is widely accepted that normal and non-dysplastic mucosa show nuclear expression of p63 in the basal and parabasal keratinocytes of the epithelium, with the major functioning isoform being ΔNp63. As dysplasia increased in severity, the percentage of p63 positive cells increases and extends into the upper epithelial layers. In addition, overexpression of p63, especially ΔNp63, is frequently seen in HNSCC tumors and HNSCC-derived cell lines<sup>22-25</sup>. Additionally, oral leukoplakia with increased ΔNp63 expression and inflammatory cell infiltration exhibits a higher rate of cancer development and worse prognosis<sup>26</sup>.

In our study, all cases of leukoplakia showed p63 expression, which is similar to studies by Takeda et al.<sup>27</sup>, Chen et al.<sup>24</sup>, Vered et al.<sup>28</sup>, Bortoluzzi et al.<sup>23</sup>, and Choi et al.<sup>29</sup>. In the present study, 62% cases of mild dysplasia showed mild expression, while 66.54% cases of severe dysplasia showed moderate to intense expression. Thus, p63 expression increased parallel to the severity of dysplasia, similar to findings of Takeda et al.<sup>27</sup>. In addition, all cases of OSCC showed positive p63 expression. This finding is correlated with reports from other studies of Sakiz et al.<sup>30</sup>, Moergel et

al.<sup>31</sup>, Chen et al.<sup>24</sup>, Bortoluzzi et al.<sup>23</sup>, Chen et al.<sup>32</sup>, Faridoni-Laurens et al.<sup>33</sup>, and Choi et al.<sup>29</sup>, who reported 100% positive p63 expression.

Out of 30 OSCC cases, 11 cases (36.7%) showed mild, 13 cases (43.3%) showed moderate, and 6 cases (20.0%) showed intense p63 expression. This is similar the results of a study by de Oliveira et al.<sup>25</sup>, who found 31.1% mild, 50% moderate, and 18.9% intense p63 expression. The results indicated that 93.33% cases of WDSCC showed mild to moderate, 62.5% cases of MDSCC showed moderate, and 100% cases of PDSCC showed intense p63 expression, indicating that p63 expression increased with poor histological grade. This result was statistically significant ( $P < 0.05$ ).

A literature search indicated that very few studies have reported isolated examination of either leukoplakia or OSCC. This study involved both cyclin D1 and p63 expression in leukoplakia as well as all grades of OSCC. The expression of both cyclin D1 and p63 increased as the stage of dysplasia in leukoplakia cases increased from mild to severe.(Table 5) The total cyclin D1 and p63 expression was more general with well-differentiated SCC. In contrast, the intensity of OSCC in poorly-differentiated cases was greater than that in well- and moderately-differentiated SCC.(Table 6) This indicates that the cancer prognosis is evident from increased expression as dysplasia increases, which is in accordance with Todd et al.<sup>3</sup>.

Overexpression of p63 has been reported in various tumors, including adenocarcinoma and SCC<sup>34,35</sup>, adenoid carcinoma, polymorphous low-grade adenocarcinoma and basal cell and canalicular adenomas<sup>36</sup>, esophageal carcinoma<sup>6</sup>, and prostate cancer<sup>7</sup>. p63 expression was mainly noted in the peripheral cells of tumor nests in the well-differentiated tumor area, similar to a report by Chen et al.<sup>32</sup>.

The overall expression of cyclin D1 and p63 correlates with poor histological grades of OSCC and leukoplakia. The increased cyclin D1 and p63 expression parallel with the severity of lesions likely reflects the intense proliferative activity and invasiveness of these lesions. In general, cyclin D1 and p63 expression increased with increased grade of dysplasia in leukoplakia and OSCC.

## V. Conclusion

In this study, we conclude that cyclin D1 and p63 are involved in carcinogenesis, which is associated with changes from early dysplasia to poorly-differentiated carcinoma, and these changes are noted with higher expression patterns in leukoplakia and OSCC. We found a significant association

between increased cyclin D1 expression in mild and severe dysplasia in leukoplakia cases, but not with other groups (mild vs moderate and moderate vs severe).(Table 7) Hence, the results indicate that the severity of dysplasia increases with increased expression of cyclin D1 and can indicate a high risk for malignant transformation. Cyclin D1 and p63 expression was significantly higher than that in well-differentiated SCC and poorly-differentiated SCC, respectively.(Table 8) IHC demonstration of these gene products can be a useful tool for a more precise prognosis of leukoplakia and OSCC. Similar studies with a larger sample size in different areas of the oral cavity and that assess all stages of SCC will provide additional insight into oral carcinogenesis and the roles of cyclin D1 and p63.

## Conflict of Interest

No potential conflict of interest relevant to this article was reported.

## ORCID

Sunit B. Patel, <http://orcid.org/0000-0003-4701-2466>

Bhari S. Manjunatha, <http://orcid.org/0000-0002-4415-2538>

Vandana Shah, <http://orcid.org/0000-0001-9049-3942>

Nishit Soni, <http://orcid.org/0000-0001-6548-9255>

Rakesh Sutariya, <http://orcid.org/0000-0002-0302-4468>

## References

1. Fregonesi PA, Teresa DB, Duarte RA, Neto CB, de Oliveira MR, Soares CP. p16(INK4A) immunohistochemical overexpression in premalignant and malignant oral lesions infected with human papillomavirus. *J Histochem Cytochem* 2003;51:1291-7.
2. Peghini PE, Fehr J. Analysis of cyclin D1 expression by quantitative real-time reverse transcription-polymerase chain reaction in the diagnosis of mantle cell lymphoma. *Am J Clin Pathol* 2002;117:237-45.
3. Todd R, Hinds PW, Munger K, Rustgi AK, Opitz OG, Suliman Y, et al. Cell cycle dysregulation in oral cancer. *Crit Rev Oral Biol Med* 2002;13:51-61.
4. Hosokawa Y, Arnold A. Cyclin D1/PRAD1 as a central target in oncogenesis. *J Lab Clin Med* 1996;127:246-52.
5. Fracchiolla NS, Pruneri G, Pignataro L, Carboni N, Capaccio P, Boletini A, et al. Molecular and immunohistochemical analysis of the bcl-1/cyclin D1 gene in laryngeal squamous cell carcinomas: correlation of protein expression with lymph node metastases and advanced clinical stage. *Cancer* 1997;79:1114-21.
6. Hu H, Xia SH, Li AD, Xu X, Cai Y, Han YL, et al. Elevated expression of p63 protein in human esophageal squamous cell carcinomas. *Int J Cancer* 2002;102:580-3.
7. Shah RB, Zhou M, LeBlanc M, Snyder M, Rubin MA. Comparison of the basal cell-specific markers, 34betaE12 and p63, in the

- diagnosis of prostate cancer. *Am J Surg Pathol* 2002;26:1161-8.
8. Castle JT, Cardinali M, Kratochvil FJ, Abbondanzo SL, Kessler HP, Auclair PL, et al. P53 and cyclin D1 staining patterns of malignant and premalignant oral lesions in age-dependent populations. *Oral Surg Oral Med Oral Pathol Oral Radiol Endod* 1999;88:326-32.
  9. Poon RYC. Cell cycle control. *Encyclopedia Cancer* 1997;1:246-55.
  10. Kumar V, Cotran RS, Robbins SL. Robbins basic pathology. 7th ed. Philadelphia: Saunders; 2003.
  11. Weinstein IB, Zhou P. Cell cycle control gene defects and human cancer. *Encyclopedia Cancer* 1997;1:256-67.
  12. Mate JL, Ariza A, Aracil C, López D, Isamat M, Pérez-Piteira J, et al. Cyclin D1 overexpression in non-small cell lung carcinoma: correlation with Ki67 labelling index and poor cytoplasmic differentiation. *J Pathol* 1996;180:395-9.
  13. Angadi PV, Krishnapillai R. Cyclin D1 expression in oral squamous cell carcinoma and verrucous carcinoma: correlation with histological differentiation. *Oral Surg Oral Med Oral Pathol Oral Radiol Endod* 2007;103:e30-5.
  14. Lam KY, Ng IO, Yuen AP, Kwong DL, Wei W. Cyclin D1 expression in oral squamous cell carcinomas: clinicopathological relevance and correlation with p53 expression. *J Oral Pathol Med* 2000;29:167-72.
  15. Goto H, Kawano K, Kobayashi I, Sakai H, Yanagisawa S. Expression of cyclin D1 and GSK-3beta and their predictive value of prognosis in squamous cell carcinomas of the tongue. *Oral Oncol* 2002;38:549-56.
  16. Bartkova J, Lukas J, Strauss M, Bartek J. Cell cycle-related variation and tissue-restricted expression of human cyclin D1 protein. *J Pathol* 1994;172:237-45.
  17. Zhang YJ, Jiang W, Chen CJ, Lee CS, Kahn SM, Santella RM, et al. Amplification and overexpression of cyclin D1 in human hepatocellular carcinoma. *Biochem Biophys Res Commun* 1993;196:1010-6.
  18. Ruhul Quddus M, Latkovich P, Castellani WJ, James Sung C, Steinhoff MM, Briggs RC, et al. Expression of cyclin D1 in normal, metaplastic, hyperplastic endometrium and endometrioid carcinoma suggests a role in endometrial carcinogenesis. *Arch Pathol Lab Med* 2002;126:459-63.
  19. Tsuruta H, Sakamoto H, Onda M, Terada M. Amplification and overexpression of EXP1 and EXP2/Cyclin D1 genes in human esophageal carcinomas. *Biochem Biophys Res Commun* 1993;196:1529-36.
  20. Naitoh H, Shibata J, Kawaguchi A, Kodama M, Hattori T. Overexpression and localization of cyclin D1 mRNA and antigen in esophageal cancer. *Am J Pathol* 1995;146:1161-9.
  21. Mills AA. p63: oncogene or tumor suppressor? *Curr Opin Genet Dev* 2006;16:38-44.
  22. Foschini MP, Gaiba A, Cocchi R, Pennesi MG, Gatto MR, Frezza GP, et al. Pattern of p63 expression in squamous cell carcinoma of the oral cavity. *Virchows Arch* 2004;444:332-9.
  23. Bortoluzzi MC, Yurgel LS, Dekker NP, Jordan RC, Regezi JA. Assessment of p63 expression in oral squamous cell carcinomas and dysplasias. *Oral Surg Oral Med Oral Pathol Oral Radiol Endod* 2004;98:698-704.
  24. Chen YK, Hsue SS, Lin LM. Expression of p63 protein and mRNA in oral epithelial dysplasia. *J Oral Pathol Med* 2005;34:232-9.
  25. de Oliveira LR, Ribeiro-Silva A, Zucoloto S. Prognostic impact of p53 and p63 immunoreexpression in oral squamous cell carcinoma. *J Oral Pathol Med* 2007;36:191-7.
  26. Saintigny P, El-Naggar AK, Papadimitrakopoulou V, Ren H, Fan YH, Feng L, et al. DeltaNp63 overexpression, alone and in combination with other biomarkers, predicts the development of oral cancer in patients with leukoplakia. *Clin Cancer Res* 2009;15:6284-91.
  27. Takeda T, Sugihara K, Hirayama Y, Hirano M, Tanuma JI, Semba I. Immunohistological evaluation of Ki-67, p63, CK19 and p53 expression in oral epithelial dysplasias. *J Oral Pathol Med* 2006;35:369-75.
  28. Vered M, Allon I, Dayan D. Maspin, p53, p63, and Ki-67 in epithelial lesions of the tongue: from hyperplasia through dysplasia to carcinoma. *J Oral Pathol Med* 2009;38:314-20.
  29. Choi HR, Batsakis JG, Zhan F, Sturgis E, Luna MA, El-Naggar AK. Differential expression of p53 gene family members p63 and p73 in head and neck squamous tumorigenesis. *Hum Pathol* 2002;33:158-64.
  30. Sakiz D, Turkmenoglu TT, Kabukcuoglu F. The expression of p63 and p53 in keratoacanthoma and intraepidermal and invasive neoplasms of the skin. *Pathol Res Pract* 2009;205:589-94.
  31. Moergel M, Abt E, Stockinger M, Kunkel M. Overexpression of p63 is associated with radiation resistance and prognosis in oral squamous cell carcinoma. *Oral Oncol* 2010;46:667-71.
  32. Chen YK, Hsue SS, Lin LM. Immunohistochemical demonstration of p63 in DMBA-induced hamster buccal pouch squamous cell carcinogenesis. *Oral Dis* 2003;9:235-40.
  33. Faridoni-Laurens L, Bosq J, Janot F, Vayssade M, Le Bihan ML, Kaghad M, et al. P73 expression in basal layers of head and neck squamous epithelium: a role in differentiation and carcinogenesis in concert with p53 and p63? *Oncogene* 2001;20:5302-12.
  34. Shirendeb U, Hishikawa Y, Moriyama S, Win N, Thu MM, Mar KS, et al. Human papillomavirus infection and its possible correlation with p63 expression in cervical cancer in Japan, Mongolia, and Myanmar. *Acta Histochem Cytochem* 2009;42:181-90.
  35. Di Como CJ, Urist MJ, Babayan I, Drobnjak M, Hedvat CV, Teruya-Feldstein J, et al. p63 expression profiles in human normal and tumor tissues. *Clin Cancer Res* 2002;8:494-501.
  36. Edwards PC, Bhuiya T, Kelsch RD. Assessment of p63 expression in the salivary gland neoplasms adenoid cystic carcinoma, polymorphous low-grade adenocarcinoma, and basal cell and canalicular adenomas. *Oral Surg Oral Med Oral Pathol Oral Radiol Endod* 2004;97:613-9.