



Metastatic hepatocellular carcinoma in the maxilla and temporal bone: a rare case report

Juyeon Cho

Department of Dentistry, Dongsan Hospital, Keimyung University School of Medicine, Daegu, Korea

Abstract (J Korean Assoc Oral Maxillofac Surg 2021;47:224-228)

Hepatocellular carcinoma (HCC) is a common, primary malignant liver disease that usually metastasizes to the lungs, followed by the abdominal lymph nodes and brain. However, extrahepatic metastasis to the maxillofacial area is uncommon and predominates in the mandible, so HCCs in the maxilla or temporal bone from a primary hepatic lesion are extremely rare. We present a case of HCC in the maxilla and temporal bone in a 52-year-old male, which was first suspected to be a squamous cell carcinoma after computed tomography but was confirmed as a metastasis related to his primary HCC after fine-needle aspiration biopsy followed by immunohistochemical analysis.

Key words: Hepatocellular carcinoma, Metastasis, Maxilla, Temporal bone

[paper submitted 2020. 1. 31 / revised 2020. 4. 3 / accepted 2020. 4. 16]

I. Introduction

Hepatocellular carcinoma (HCC) is a common liver malignancy, the sixth most frequently diagnosed cancer, and the second leading cause of cancer death worldwide^{1,2}. HCC frequently metastasizes to the lungs (55%), followed by the abdominal lymph nodes (41%), bones (28%), and brain²⁻⁴. However, metastasis to the maxillofacial area is rare; when it occurs, HCC usually affects the mandible instead of the maxilla or temporal region⁵. These metastatic neoplasms do not have special pathognomonic distinctions in the clinical or radiographical findings⁶. Therefore, it can be a challenge for clinicians to make a differential diagnosis in malignant tumors of the maxillofacial region. Despite the rare incidence of this type of metastatic tumor in the head and neck region, it remains vital to consider the occurrence of both primary and secondary metastatic malignancies and also to use fine-

needle aspiration biopsy (FNAB) followed by immunohistochemical analysis.

This article presents an extremely rare case of metastatic HCC that involved the maxilla and temporal region and was properly diagnosed using immunohistochemical markers.

II. Case Report

A 52-year-old male with a previous medical history of alcohol abuse was referred by the Division of Gastroenterology to the Department of Dentistry for an evaluation of left facial swelling. The firm swelling around the left zygoma had begun two to three weeks prior to the patient's first visit and was accompanied by a slight toothache without tenderness. The patient had had a transcatheter arterial chemoembolization (TACE) procedure several months before his presentation and a percutaneous ethanol injection therapy (PEIT) one month ago to treat his primary HCC and was receiving regular follow-up for chronic hepatitis B, liver cirrhosis with splenomegaly, and residual HCC in segment (S) 7.

Dental panoramic radiographs were obtained first as an initial examination, and then computed tomography (CT) was collected followed by FNAB for further diagnosis. Suspicious thinning of the maxillary wall and slight haziness of the maxillary sinus were observed in the radiograph (Fig. 1) The CT scans showed a 43 mm × 26 mm enhancing soft tis-

Juyeon Cho

Department of Dentistry, Dongsan Hospital, Keimyung University School of Medicine, 1035 Dalgubeol-daero, Dalseo-gu, Daegu 42601, Korea
TEL: +82-53-258-4681

E-mail: cipher01@dsmc.or.kr

ORCID: <https://orcid.org/0000-0001-8338-9493>

© This is an open-access article distributed under the terms of the Creative Commons Attribution Non-Commercial License (<http://creativecommons.org/licenses/by-nc/4.0/>), which permits unrestricted non-commercial use, distribution, and reproduction in any medium, provided the original work is properly cited.

Copyright © 2021 The Korean Association of Oral and Maxillofacial Surgeons. All rights reserved.

sue opacification in the left maxillary sinus and bony destruction of the lateral wall of both the left maxillary sinus and left zygoma, as well as extensive invasion of the left masseter, temporalis, and subcutaneous fat of the left cheek and preauricular area, along with bony destruction of the medial wall of the left maxillary sinus and invasion of the middle meatus. In addition, questionable thinning of the roof of the left maxillary sinus and invasion of the retro- and peri-maxillary fat were also noted, which were suggestive of maxillary squamous cell carcinoma upon the initial radiographic analysis. (Fig. 2, 3)

A few days later, FNAB with an approach from the facial lesion was performed for further diagnosis. This procedure



Fig. 1. Initial dental panoramic X-ray. Haziness in left maxillary sinus and thinning of left zygoma.

Juyeon Cho: Metastatic hepatocellular carcinoma in the maxilla and temporal bone: a rare case report. *J Korean Assoc Oral Maxillofac Surg* 2021

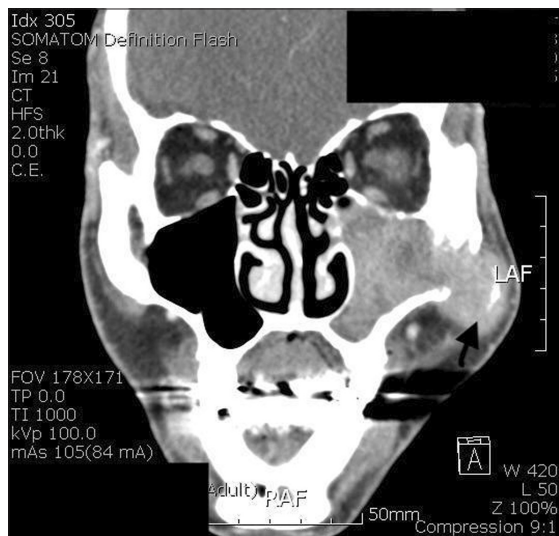


Fig. 2. Facial computed tomography scan (coronal). Enhancing soft tissue opacification in the left maxillary sinus and bony destruction of the lateral wall of the left maxillary sinus and left zygoma (arrow).

Juyeon Cho: Metastatic hepatocellular carcinoma in the maxilla and temporal bone: a rare case report. *J Korean Assoc Oral Maxillofac Surg* 2021

showed atypical clusters of cells, which turned out to be hepatocytes owing to their sinusoid-like thin blood vessels with abundant cytoplasm, characteristic findings of liver cells. The washed-out cell block also showed atypical cell clusters. These tumor cells had abundant eosinophilic cytoplasm and prominent nucleoli as well as noted sinusoid-like vessels upon hematoxylin and eosin staining. Immunohistochemistry revealed positive staining for human hepatocyte paraffin (HepPar1) antibody, while glutamine synthetase revealed that these tumor cells were hepatocytes. However, negative staining for p63 (which is nonreactive in HCC) in addition to positive staining in a sinusoidal pattern for the CD34 antibody (which is positive for HCC but negative for sinusoids in a non-neoplastic liver) were noted. These findings were consistent with metastatic HCC. (Fig. 4)

The patient was transferred to the Division of Gastroenterology for further evaluation and treatment. Abdominal CT revealed increased sizes of the HCC lesions in S7 and intrahepatic metastases in S2, S3, and S7 in both the right and left lobes of the liver (Fig. 5) but no other definite metastases except in the maxilla and temporal bone according to the bone scan and chest X-ray. For palliative therapy, the Department of Radiation Oncology scheduled 200 cGy of radiation treatment of the facial lesion five times per week for three weeks. However, there was little change in the size of the facial lesion. Additional TACE and PEIT procedures were performed at the primary hepatic lesion. Despite this treat-



Fig. 3. Facial computed tomography scan (axial). Extensive invasion of the left masseter possible invasion of temporalis and subcutaneous fat of the left cheek and preauricular area (arrow).

Juyeon Cho: Metastatic hepatocellular carcinoma in the maxilla and temporal bone: a rare case report. *J Korean Assoc Oral Maxillofac Surg* 2021

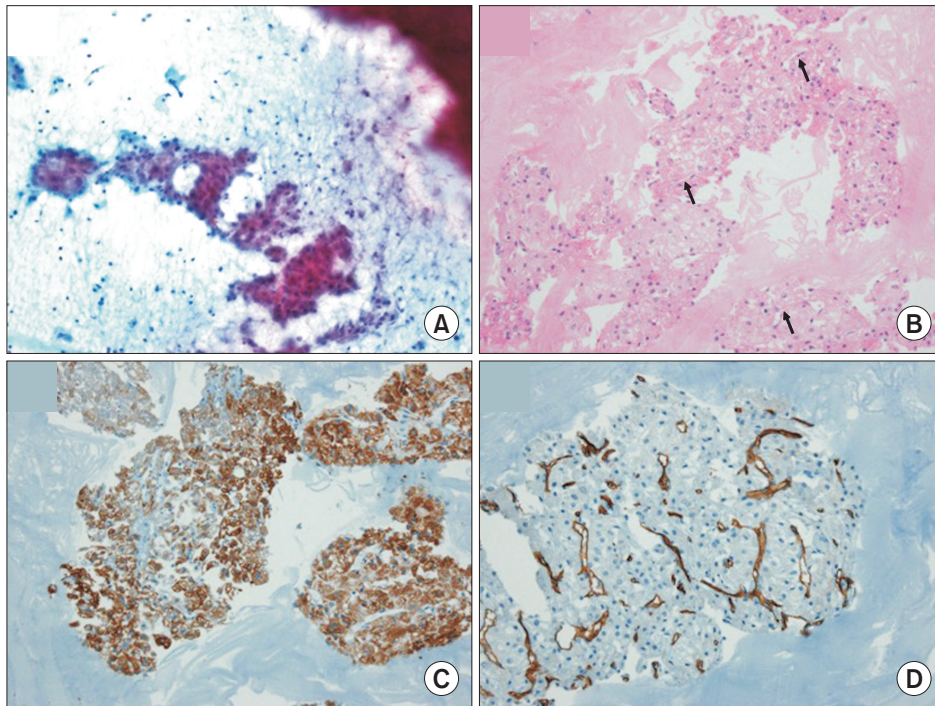


Fig. 4. Fine-needle aspiration biopsy and Immunohistochemical findings. A. Fine needle aspirate smear shows atypical shaped cell clusters (Papanicolaou staining, $\times 200$). B. Cell block shows atypical cell clusters. The tumor cells have abundant eosinophilic cytoplasm and prominent nucleolus. Also, sinusoid-like thin blood vessels are noted (arrows); suspicious of liver cell (H&E staining, $\times 200$). C. The tumor cells are stained for Hepar-1 antibody ($\times 200$); proof of hepatocyte. D. Thin blood vessels are positive for CD34 ($\times 200$); proof of hepatocellular carcinoma.

Juyeon Cho: Metastatic hepatocellular carcinoma in the maxilla and temporal bone: a rare case report. *J Korean Assoc Oral Maxillofac Surg 2021*



Fig. 5. Abdominal dynamic computed tomography scan. Several hepatocellular carcinoma masses in the liver (arrows).

Juyeon Cho: Metastatic hepatocellular carcinoma in the maxilla and temporal bone: a rare case report. *J Korean Assoc Oral Maxillofac Surg 2021*

ment, the patient's multiple HCCs grew larger in both hepatic lobes, replacing nearly the whole liver. Enlarged abdominal lymph nodes were noted, and the metastatic mass involving the cheek and zygoma had enlarged to the left orbit and nasal cavity nine months after the additional procedures. The patient expired within a year.

III. Discussion

Only 1% of oral cancers metastasize from the primary le-

sion outside the head and neck area⁷. Of the primary tumor types that do metastasize to the facial area, those of the thyroid, lung, and kidney are the most frequent⁴. However, while HCC is one of the most common malignancies to arise in the liver, it rarely spreads to the facial area but instead is often found in the lungs (34%-70%) and lymph nodes (16%-45%). The prognosis of HCC is poor, with an overall five-year survival rate of 20%. The common staging system of HCC used to determine treatment options and prognoses classifies patients based on their tumor stage, performance status, liver function, and cancer-related symptoms⁸. The present patient presented with advanced-stage HCC and distant metastases.

Metastatic HCC has a male predilection (especially in patients over the age of 60 years) that resembles the characteristics of primary HCC^{2,9,10}. Although its distant metastasis to the orofacial region is uncommon, the mandible or the gingiva of the mandible is the most frequent target; most mandibular lesions are located in the posterior mandible^{8,9,11-13}. In 1998, Chin et al.¹⁴ published a review of metastatic HCC in the oral cavity. Most patients were male (46:4 male-to-female ratio); 90% of the patients were older than 50 years of age, and most cases involved the mandible (40 cases in the mandible, 8 cases in the maxilla, 1 case in the tonsil, and 1 case in both the mandible and maxilla). In addition, zygomatic bone involvement of metastatic HCC has rarely been presented. Only four cases were reported in one review² from 2019. In another study, only 13 out of 77 cases were reported as

metastatic HCCs in the maxillary and zygomatic region, with just 2 cases invading the zygomatic bone¹⁵. The prognosis for patients with oral metastatic HCC is very poor even after surgical treatment, radiation therapy, chemotherapy using sorafenib, or TACE/PEIT of the primary lesion, with a mean survival rate of 21 weeks and a one-year survival rate of just 15% after diagnosis^{2,16,17}.

Immunohistochemistry is a useful method for the diagnosis of HCC because antigens for hepatocytes are considered useful markers. Glypican-3, HepPar-1, and CD34 are the immunohistochemical markers traditionally used to confirm HCC^{2,18}. In the present case, a malignant lesion in the maxilla and temporal bone was confirmed as a rare case of metastatic HCC from a primary hepatic lesion based on the differential diagnosis made using CT and FNAB along with immunohistochemistry. In the head and neck region, other metastatic tumors from the breast, kidney, and adrenal glands may bear histopathological resemblance to the liver-like pattern of HCC¹⁹. Furthermore, metastases from HCC to the attached gingiva can imitate pyogenic granuloma or hyperplastic lesions clinically, which could lead to misdiagnosis^{13,16}. Therefore, immunohistochemistry might be very useful in these cases^{3,13,19}. Severe postoperative hemorrhage during or after incisional biopsy has been reported due to the vascularity of this lesion, so it is recommended that only FNAB should be attempted as a surgical diagnostic procedure when HCC is strongly suspected¹⁷.

Surgical resection was not planned in the present case because the patient was in the advanced stage of HCC, which means that metastasis was widespread in the liver, and the surgical risk was high. Treatment for HCC metastasis is typically palliative, and radiation therapy has been shown to be effective palliation for bony metastasis in patients with HCC¹⁷. In addition, targeted drugs for advanced HCC are also the standard treatment; sorafenib and apatinib are commonly used antiangiogenic agents, although the former has shown a lower response².

In conclusion, maxillary and zygomatic bone metastases from HCC are rare, and they present a challenge for clinicians. To ensure prompt management, the differential diagnosis should be made while considering other primary or secondary malignancies. Clinicians should suspect metastatic HCC when they encounter a malignant lesion in the head and neck area, especially in patients with high-risk factors like hepatitis B viral infection, alcohol abuse, a history of HCC, and liver cirrhosis.

Author's Contributions

The data collection and manuscript writing were done by J.C.

Conflict of Interest

No potential conflict of interest relevant to this article was reported.

References

1. Tang A, Hallouch O, Chernyak V, Kamaya A, Sirlin CB. Epidemiology of hepatocellular carcinoma: target population for surveillance and diagnosis. *Abdom Radiol (NY)* 2018;43:13-25. <https://doi.org/10.1007/s00261-017-1209-1>
2. Lei Q, Chen H, Zheng H, Deng F, Wang F, Li J, et al. Zygomatic bone metastasis from hepatocellular carcinoma and the therapeutic efficacy of apatinib: a case report and literature review. *Medicine (Baltimore)* 2019;98:e14595. <https://doi.org/10.1097/MD.00000000000014595>
3. Tomanovic N, Krstic A, Brasanac D, Dimitrijevic M, Terzic T, Boricic I. Zygomatic bone metastasis as an initial presentation of hepatocellular carcinoma. *Arch Iran Med* 2013;16:675-8.
4. Shen ML, Kang J, Wen YL, Ying WM, Yi J, Hua CG, et al. Metastatic tumors to the oral and maxillofacial region: a retrospective study of 19 cases in West China and review of the Chinese and English literature. *J Oral Maxillofac Surg* 2009;67:718-37. <https://doi.org/10.1016/j.joms.2008.06.032>
5. Junquera L, Rodríguez-Recio C, Torre A, Sánchez-Mayoral J, Fresno MF. Hepatocellular carcinoma metastatic to the mandible: a case involving severe hemorrhage. *Med Oral* 2004;9:345-9.
6. Misra SR, Shankar YU, Rastogi V, Maragathavalli G. Metastatic hepatocellular carcinoma in the maxilla and mandible, an extremely rare presentation. *Contemp Clin Dent* 2015;6(Suppl 1):S117-21. <https://doi.org/10.4103/0976-237X.152966>
7. van der Waal RI, Buter J, van der Waal I. Oral metastases: report of 24 cases. *Br J Oral Maxillofac Surg* 2003;41:3-6. [https://doi.org/10.1016/s0266-4356\(02\)00301-7](https://doi.org/10.1016/s0266-4356(02)00301-7)
8. Grandhi MS, Kim AK, Ronnekleiv-Kelly SM, Kamel IR, Ghasebeh MA, Pawlik TM. Hepatocellular carcinoma: from diagnosis to treatment. *Surg Oncol* 2016;25:74-85. <https://doi.org/10.1016/j.suronc.2016.03.002>
9. Fujihara H, Chikazu D, Saijo H, Suenaga H, Mori Y, Iino M, et al. Metastasis of hepatocellular carcinoma into the mandible with radiographic findings mimicking a radicular cyst: a case report. *J Endod* 2010;36:1593-6. <https://doi.org/10.1016/j.joen.2010.05.009>
10. Choi SJ, Kim YS, Kim NR, Jeong SW, Lee SH, Jeong JS, et al. A case of hepatocellular carcinoma with metastasis to gingival mucosa. *Korean J Hepatol* 2002;8:495-9.
11. Kamatani T, Tatemoto Y, Tateishi Y, Yamamoto T. Isolated metastasis from hepatocellular carcinoma to the mandibular condyle with no evidence of any other metastases: a case report. *Br J Oral Maxillofac Surg* 2008;46:499-501. <https://doi.org/10.1016/j.bjoms.2008.01.001>
12. Hou Y, Deng W, Deng G, Hu L, Liu C, Xu L. Gingival metastasis from primary hepatocellular carcinoma: a case report and literature review of 30 cases. *BMC Cancer* 2019;19:925. <https://doi.org/10.1186/s12885-019-6020-7>
13. Ramón Ramirez J, Seoane J, Montero J, Esparza Gómez GC, Cero R. Isolated gingival metastasis from hepatocellular carcinoma mimicking a pyogenic granuloma. *J Clin Periodontol* 2003;30:926-

9. <https://doi.org/10.1034/j.1600-051x.2003.00391.x>
14. Chin A, Liang TS, Borislow AJ. Initial presentation of hepatocellular carcinoma as a mandibular mass: case report and review of the literature. *Oral Surg Oral Med Oral Pathol Oral Radiol Endod* 1998;86:457-60. [https://doi.org/10.1016/s1079-2104\(98\)90373-0](https://doi.org/10.1016/s1079-2104(98)90373-0)
15. Huang HH, Chang PH, Fang TJ. Sinonasal metastatic hepatocellular carcinoma. *Am J Otolaryngol* 2007;28:238-41. <https://doi.org/10.1016/j.amjoto.2006.08.012>
16. Rim JH, Moon SE, Chang MS, Kim JA. Metastatic hepatocellular carcinoma of gingiva mimicking pyogenic granuloma. *J Am Acad Dermatol* 2003;49:342-3. [https://doi.org/10.1067/s0190-9622\(03\)00416-x](https://doi.org/10.1067/s0190-9622(03)00416-x)
17. Yu S, Estess A, Harris W, Dillon J. A rare occurrence of hepatocellular carcinoma metastasis to the mandible: report of a case and review of the literature. *J Oral Maxillofac Surg* 2012;70:1219-23. <https://doi.org/10.1016/j.joms.2012.01.011>
18. Daley TD, Minett CP, Driman DK, Darling MR. Oral metastatic hepatocellular carcinoma: a changing demographic in Europe and North America. Immunohistochemical advances in the microscopic diagnosis. *Oral Oncol* 2011;47:62-7. <https://doi.org/10.1016/j.oraloncology.2010.07.007>
19. Greenstein A, Witherspoon R, Iqbal F, Coleman H. Hepatocellular carcinoma metastasis to the maxilla: a rare case. *Aust Dent J* 2013;58:373-5. <https://doi.org/10.1111/adj.12083>

How to cite this article: Cho J. Metastatic hepatocellular carcinoma in the maxilla and temporal bone: a rare case report. *J Korean Assoc Oral Maxillofac Surg* 2021;47:224-228. <https://doi.org/10.5125/jkaoms.2021.47.3.224>